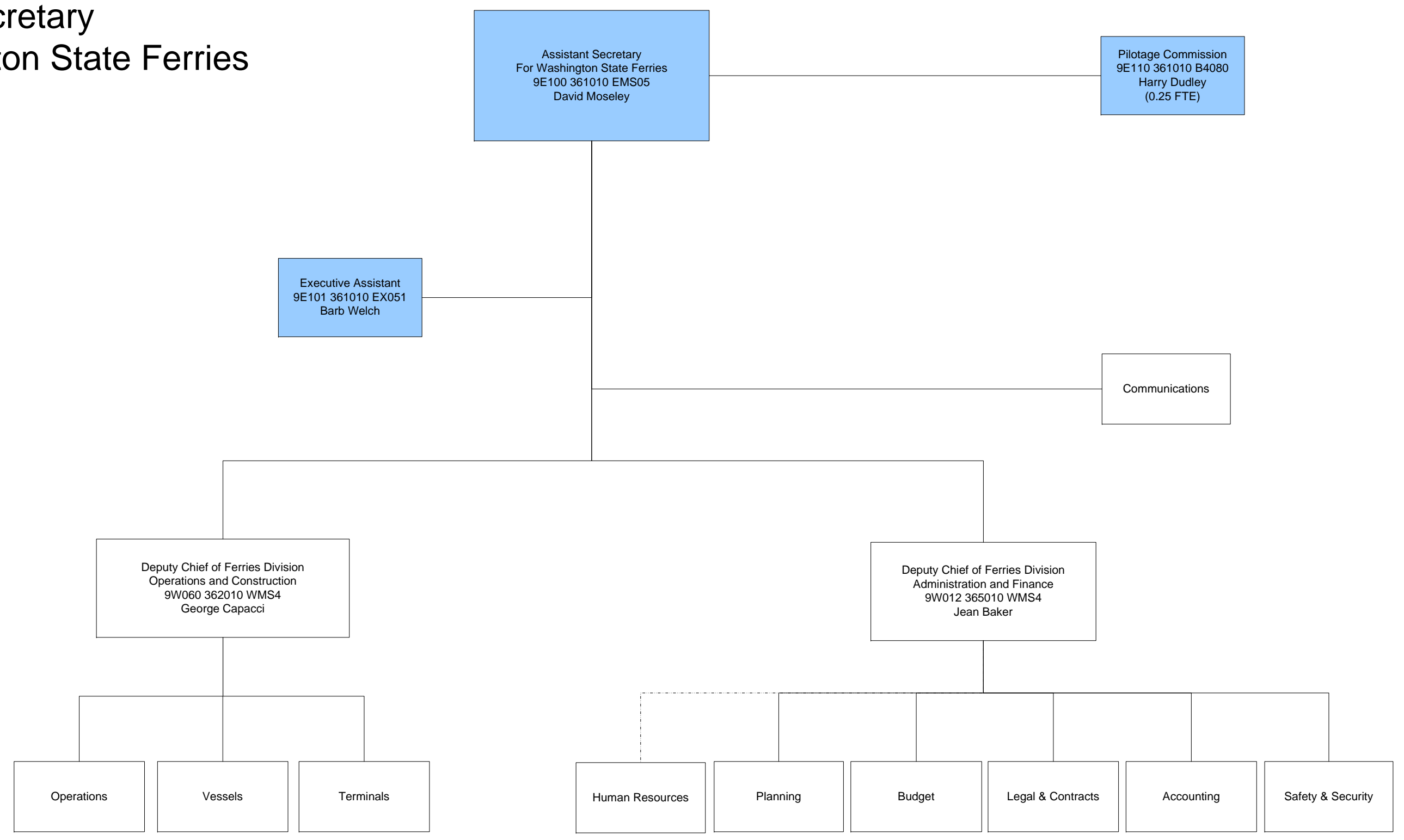


WSF ORG CHART

Assistant Secretary For Washington State Ferries

DRAFT



WSF Position Total
 Program X (Operating Budget) = 132.40
 Program W (Capital Budget) = 116.35
 Total = 248.75

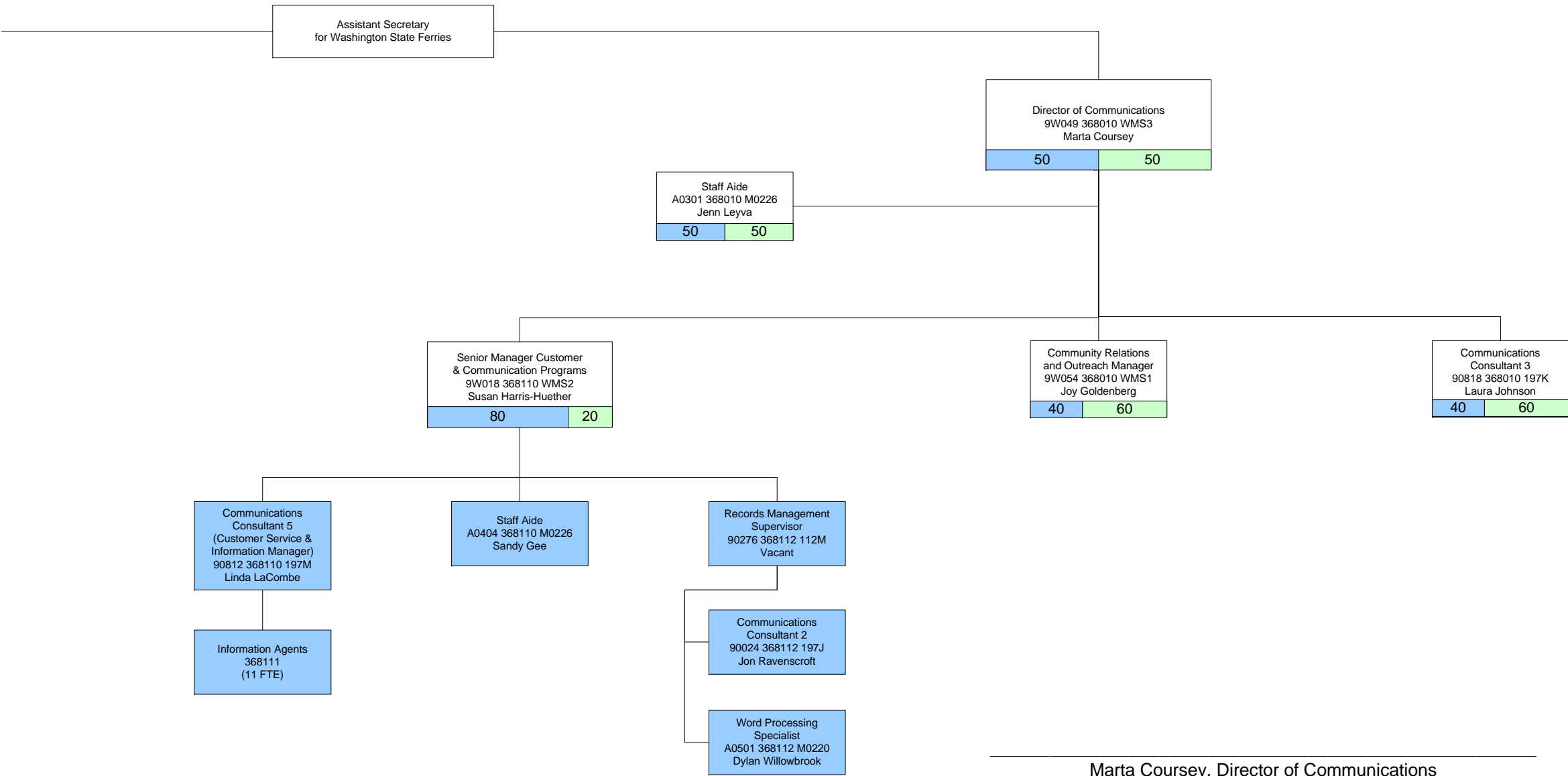
David Moseley, Assistant Secretary for
Washington State Ferries

Executive Management Services
 Program X (Operating Budget) = 2.25
 Program W (Capital Budget) = 0
 Total = 2.25

WSF ORG CHART

Assistant Secretary For Washington State Ferries

DRAFT



Marta Coursey, Director of Communications

David Moseley, Assistant Secretary for Washington State Ferries

Communications
 Program X (Operating Budget) = 18.6
 Program W (Capital Budget) = 2.4
 Total = 21.0

WSF ORG CHART

Assistant Secretary

For Washington State Ferries (1 of 3)

DRAFT

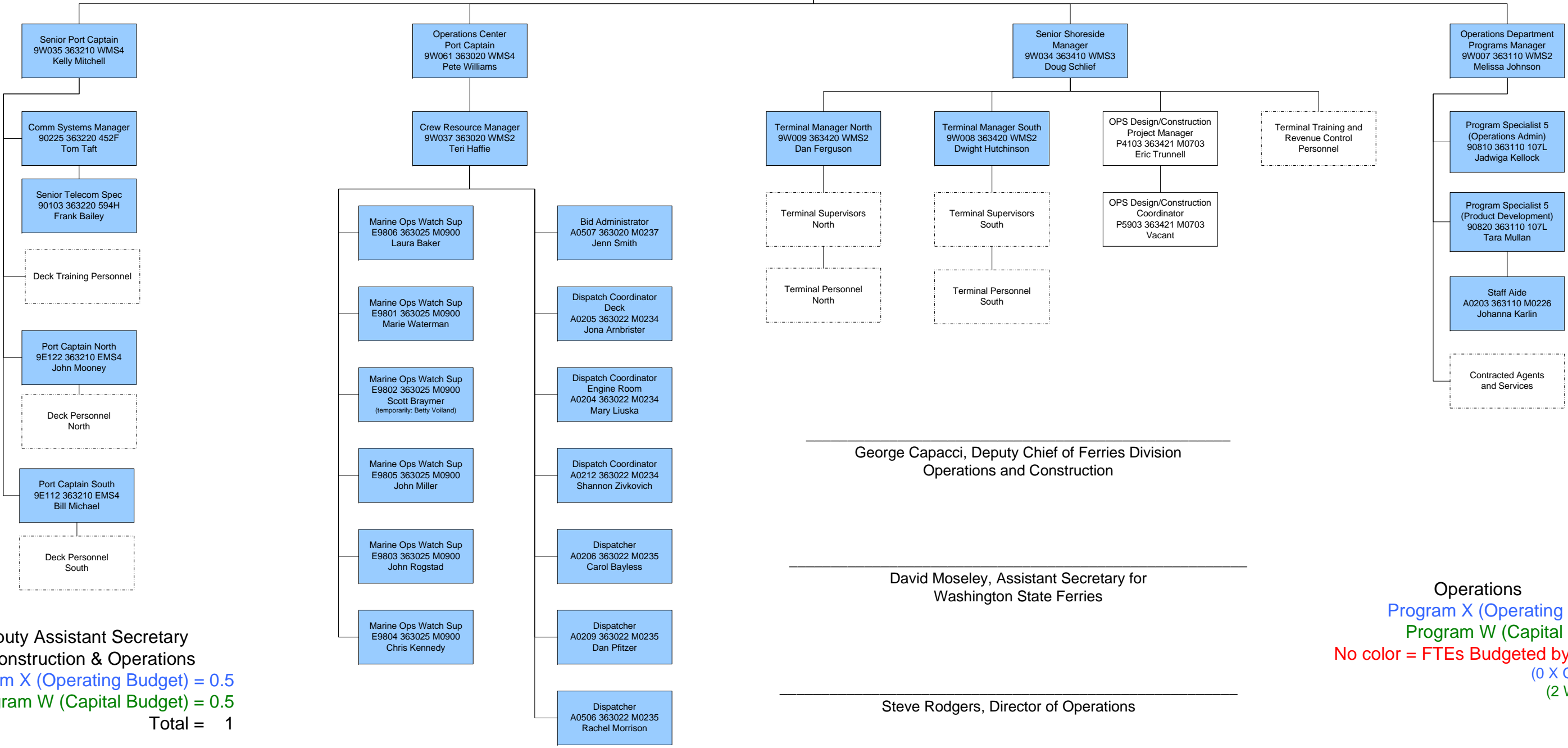
Continued on Next Page →

Deputy Chief of Ferries Division
Operations and Construction
9W060 362010 WMS4
George Capacci

50	50
----	----

Director of Operations
9W036 363010 WMS4
Steve Rodgers

Admin Assistant 5
90112 363010 105I
Karen Groth



Deputy Assistant Secretary
of Construction & Operations
Program X (Operating Budget) = 0.5
Program W (Capital Budget) = 0.5
Total = 1

Operations
Program X (Operating Budget) = 29
Program W (Capital Budget) = 0
No color = FTEs Budgeted by Project = 2
(0 X Operating)
(2 W Capital)
Total = 31

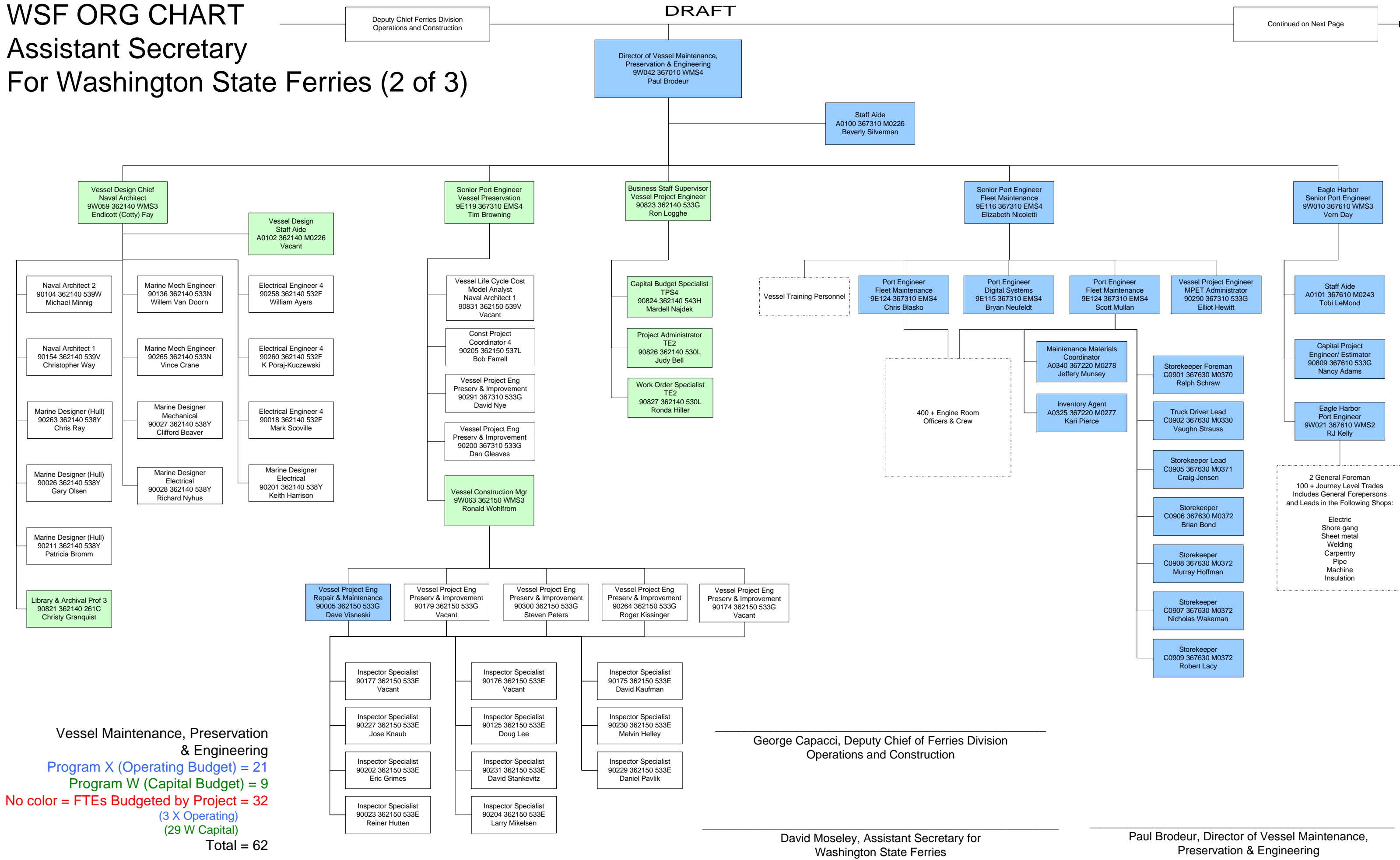
WSF ORG CHART

Assistant Secretary

For Washington State Ferries (2 of 3)

DRAFT

Continued on Next Page



Vessel Maintenance, Preservation & Engineering
 Program X (Operating Budget) = 21
 Program W (Capital Budget) = 9
 No color = FTEs Budgeted by Project = 32
 (3 X Operating)
 (29 W Capital)
 Total = 62

George Capacci, Deputy Chief of Ferries Division
Operations and Construction

David Moseley, Assistant Secretary for
Washington State Ferries

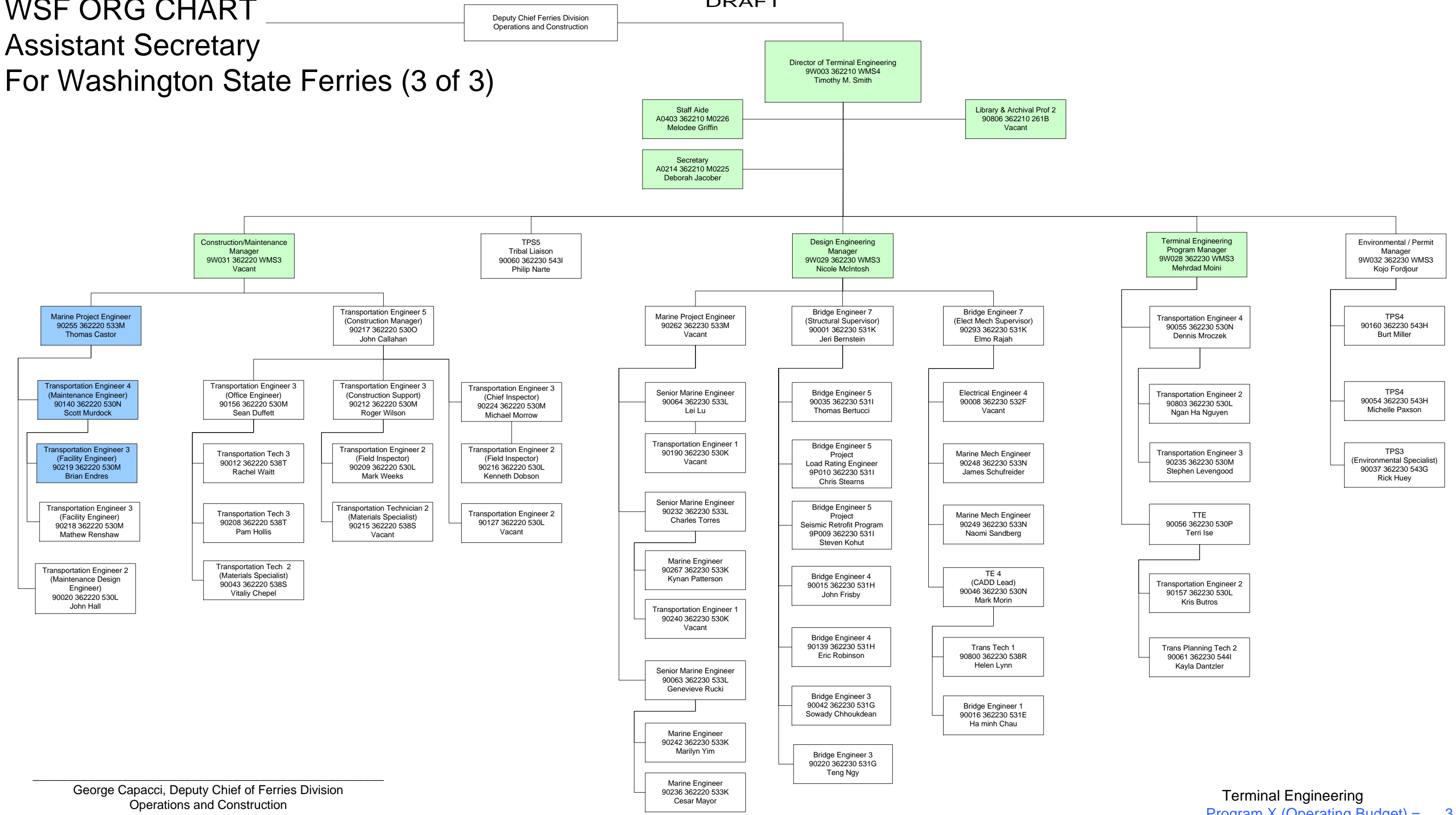
Paul Brodeur, Director of Vessel Maintenance,
Preservation & Engineering

WSF ORG CHART

Assistant Secretary

For Washington State Ferries (3 of 3)

DRAFT



George Capacci, Deputy Chief of Ferries Division
Operations and Construction

David Moseley, Assistant Secretary for
Washington State Ferries

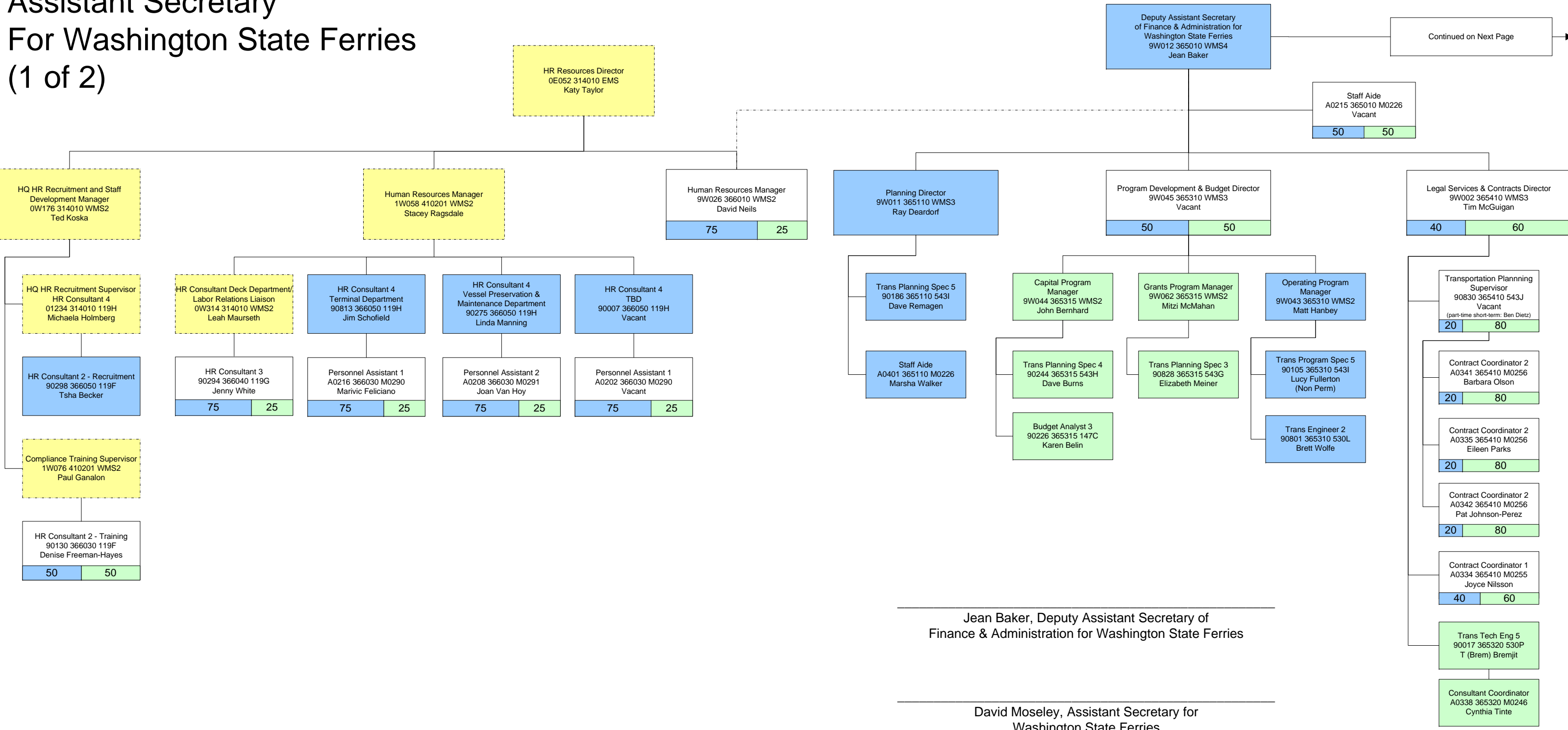
Timothy M. Smith, Director of Terminal Engineering

Terminal Engineering
 Program X (Operating Budget) = 3
 Program W (Capital Budget) = 7
 No color = FTEs Budgeted by Project = 48
 (0.5 X Operating)
 (47.5 W Capital)
 Total = 58

WSF ORG CHART

Assistant Secretary For Washington State Ferries (1 of 2)

DRAFT



Ray Deardorf, Planning Director

Program Development & Budget Director

Tim McGuigan, Legal Services & Contracts Director

Deputy Assistant Secretary of A & F
 Program X (Operating Budget) = 1.5
 Program W (Capital Budget) = 0.5
 Total = 2
 Effective 07/01/2011

Human Resources
 Program X (Operating Budget) = 8.25
 Program W (Capital Budget) = 1.75
 Total = 10

Planning
 Program X (Operating Budget) = 3
 Program W (Capital Budget) = 0
 Total = 3

Program Development & Budget
 Program X (Operating Budget) = 3.5
 Program W (Capital Budget) = 5.5
 Total = 9

Legal Services & Contracts
 Program X (Operating Budget) = 1.6
 Program W (Capital Budget) = 6.4
 Total = 8

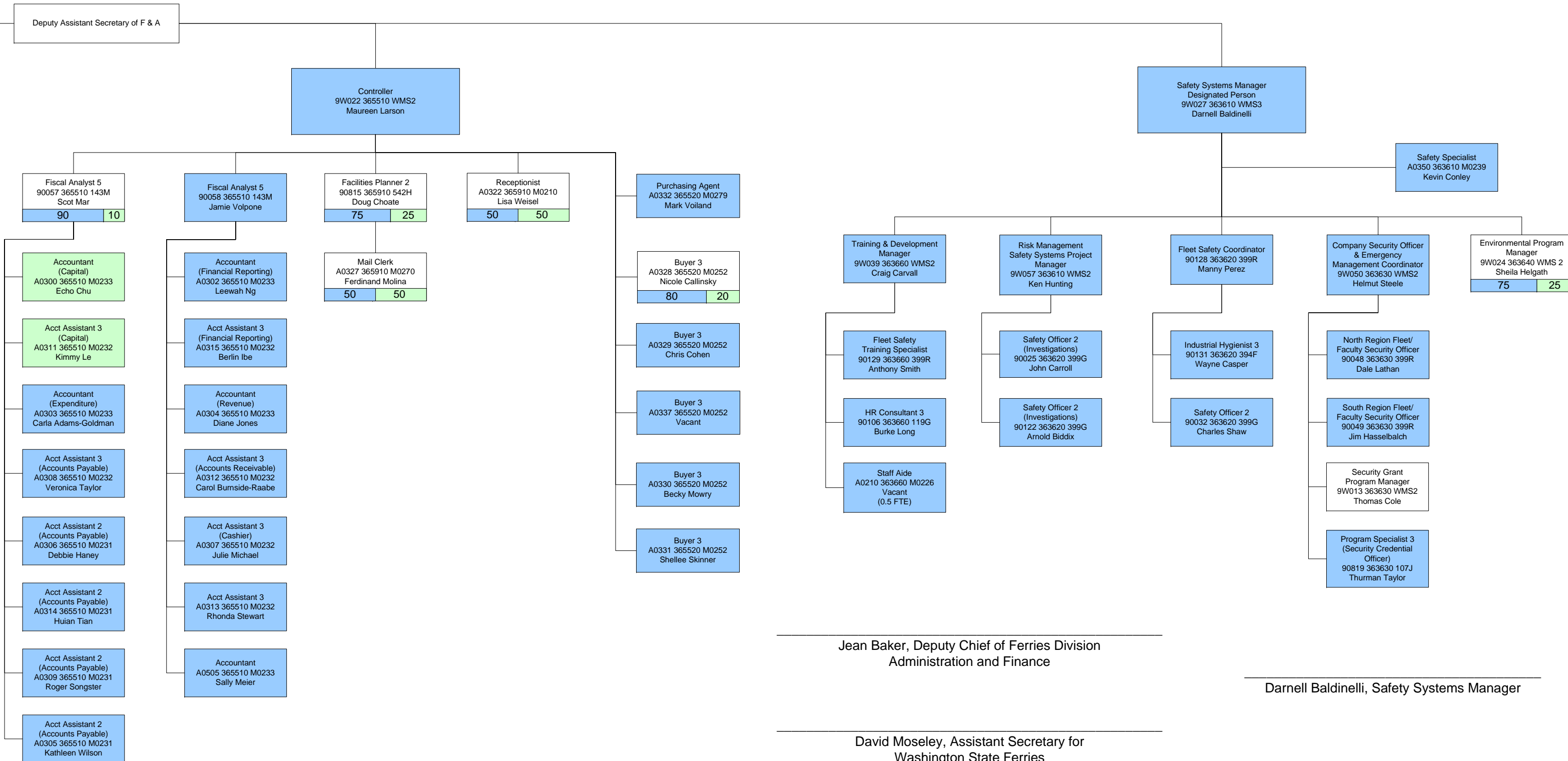
Printed on 7/7/2011

WSF ORG CHART

Assistant Secretary

For Washington State Ferries (2 of 2)

DRAFT



Accounting & Purchasing
 Program X (Operating Budget) = 23.45
 Program W (Capital Budget) = 3.55
 Total = 27

Maureen Larson, Controller

Jean Baker, Deputy Chief of Ferries Division
 Administration and Finance

Darnell Baldinelli, Safety Systems Manager

David Moseley, Assistant Secretary for
 Washington State Ferries

Safety Systems
 Program X (Operating Budget) = 16.25
 Program W (Capital Budget) = 1.25
 Total = 17.50